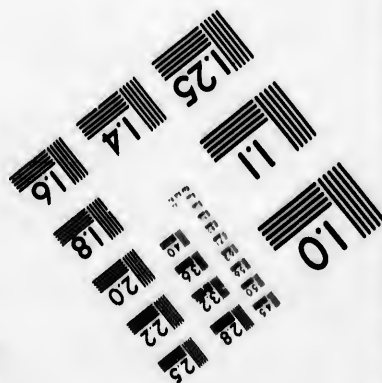
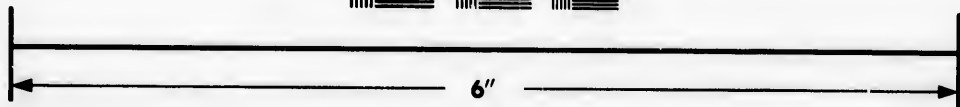
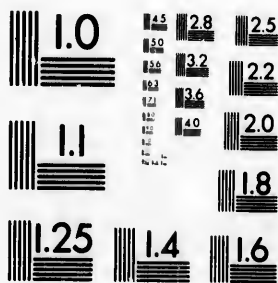


**IMAGE EVALUATION  
TEST TARGET (MT-3)**



**Photographic  
Sciences  
Corporation**

23 WEST MAIN STREET  
WEBSTER, N.Y. 14580  
(716) 872-4503

**CIHM/ICMH  
Microfiche  
Series.**

**CIHM/ICMH  
Collection de  
microfiches.**



**Canadian Institute for Historical Microreproductions / Institut canadien de microreproductions historiques**

**© 1981**

Technical and Bibliographic Notes/Notes techniques et bibliographiques

The Institute has attempted to obtain the best original copy available for filming. Features of this copy which may be bibliographically unique, which may alter any of the images in the reproduction, or which may significantly change the usual method of filming, are checked below.

L'Institut a microfilmé le meilleur exemplaire qu'il lui a été possible de se procurer. Les détails de cet exemplaire qui sont peut-être uniques du point de vue bibliographique, qui peuvent modifier une image reproduite, ou qui peuvent exiger une modification dans la méthode normale de filmage sont indiqués ci-dessous.

- Coloured covers/  
Couverture de couleur
- Covers damaged/  
Couverture endommagée
- Covers restored and/or laminated/  
Couverture restaurée et/ou pelliculée
- Cover title missing/  
Le titre de couverture manque
- Coloured maps/  
Cartes géographiques en couleur
- Coloured ink (i.e. other than blue or black)/  
Encre de couleur (i.e. autre que bleue ou noire)
- Coloured plates and/or illustrations/  
Planches et/ou illustrations en couleur
- Bound with other material/  
Relié avec d'autres documents
- Tight binding may cause shadows or distortion along interior margin/  
La reliure serrée peut causer de l'ombre ou de la distorsion le long de la marge intérieure
- Blank leaves added during restoration may appear within the text. Whenever possible, these have been omitted from filming/  
Il se peut que certaines pages blanches ajoutées lors d'une restauration apparaissent dans le texte, mais, lorsque cela était possible, ces pages n'ont pas été filmées.
- Additional comments:/  
Commentaires supplémentaires:

- Coloured pages/  
Pages de couleur
- Pages damaged/  
Pages endommagées
- Pages restored and/or laminated/  
Pages restaurées et/ou pelliculées
- Pages discoloured, stained or foxed/  
Pages décolorées, tachetées ou piquées
- Pages detached/  
Pages détachées
- Showthrough/  
Transparence
- Quality of print varies/  
Qualité inégale de l'impression
- Includes supplementary material/  
Comprend du matériel supplémentaire
- Only edition available/  
Seule édition disponible
- Pages wholly or partially obscured by errata slips, tissues, etc., have been refilmed to ensure the best possible image/  
Les pages totalement ou partiellement obscurcies par un feuillet d'errata, une pelure, etc., ont été filmées à nouveau de façon à obtenir la meilleure image possible.

This item is filmed at the reduction ratio checked below/  
Ce document est filmé au taux de réduction indiqué ci-dessous.

10X	12X	14X	16X	18X	20X	22X	24X	26X	28X	30X	32X
<input type="checkbox"/>	<input type="checkbox"/>	<input type="checkbox"/>	<input type="checkbox"/>	<input type="checkbox"/>	<input type="checkbox"/>	<input checked="" type="checkbox"/>	<input type="checkbox"/>	<input type="checkbox"/>	<input type="checkbox"/>	<input type="checkbox"/>	<input type="checkbox"/>

The copy filmed here has been reproduced thanks to the generosity of:

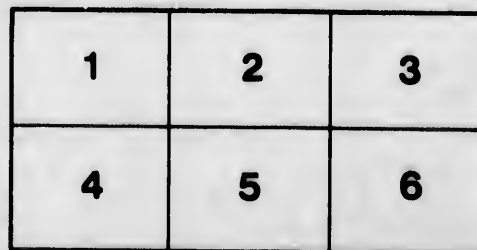
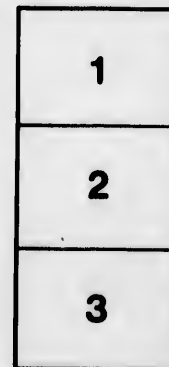
Library Division  
Provincial Archives of British Columbia

The images appearing here are the best quality possible considering the condition and legibility of the original copy and in keeping with the filming contract specifications.

Original copies in printed paper covers are filmed beginning with the front cover and ending on the last page with a printed or illustrated impression, or the back cover when appropriate. All other original copies are filmed beginning on the first page with a printed or illustrated impression, and ending on the last page with a printed or illustrated impression.

The last recorded frame on each microfiche shall contain the symbol  $\rightarrow$  (meaning "CONTINUED"), or the symbol  $\nabla$  (meaning "END"), whichever applies.

Maps, plates, charts, etc., may be filmed at different reduction ratios. Those too large to be entirely included in one exposure are filmed beginning in the upper left hand corner, left to right and top to bottom, as many frames as required. The following diagrams illustrate the method:



L'exemplaire filmé fut reproduit grâce à la générosité de:

Library Division  
Provincial Archives of British Columbia

Les images suivantes ont été reproduites avec le plus grand soin, compte tenu de la condition et de la netteté de l'exemplaire filmé, et en conformité avec les conditions du contrat de filmage.

Les exemplaires originaux dont la couverture en papier est imprimée sont filmés en commençant par le premier plat et en terminant soit par la dernière page qui comporte une empreinte d'impression ou d'illustration, soit par le second plat, selon le cas. Tous les autres exemplaires originaux sont filmés en commençant par la première page qui comporte une empreinte d'impression ou d'illustration et en terminant par la dernière page qui comporte une telle empreinte.

Un des symboles suivants apparaîtra sur la dernière image de chaque microfiche, selon le cas: le symbole  $\rightarrow$  signifie "A SUIVRE", le symbole  $\nabla$  signifie "FIN".

Les cartes, planches, tableaux, etc., peuvent être filmés à des taux de réduction différents. Lorsque le document est trop grand pour être reproduit en un seul cliché, il est filmé à partir de l'angle supérieur gauche, de gauche à droite, et de haut en bas, en prenant le nombre d'images nécessaire. Les diagrammes suivants illustrent la méthode.

tails  
du  
odifier  
une  
image

rrata  
o

belure,  
n à

NWp  
283.1  
C562ca

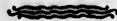
Mary Collins -  
14 Avalon Road.

# EASTER GREETING

—1891—

Reformed Episcopal Church,

—VICTORIA, B. C.—



## FINANCIAL STATEMENT

—to—

MARCH 15TH, 1891.

PROVINCIAL ARCHIVES OF B. C.

Financial

TO THE CONGREGATION OF THE "CHURCH OF OUR LORD:"

In drawing the attention of the Congregation to the annexed financial statement, the Church Committee express the conviction that the deficit therein shown arises from no inability on the part of the congregation to support the Church establishment in a creditable manner, but simply from irregularity in supplying the ordinary sources of revenue.

In the opinion of the Committee these sources, if duly maintained, would, together with the pastoral fund, be amply sufficient to meet the current expenditure. In this case the special efforts made with so much zeal by the Ladies' Committees and helpers would be available for the reduction of the funded debt, and for such other objects as usually engage the support of Christian congregations.

If, therefore, each member of the congregation would regard his or her contribution to the Sunday collection as equally due, whether absent or present, and would remember to supply the same as occasion requires, the payments to those who serve the Church, whether in the ministry or otherwise, could be regularly kept up.

In the meanwhile the present emergency demands an immediate and special effort.

It is proposed that the usual annual collection, which was deferred last year, should be held at once. On Easter Day, therefore, March 29th, 1891, collections will be taken up at both the morning and the evening service.

The Right Rev. ED. CRIDGE, B. A., will preach in the morning and the Rev. C. E. DOBBS in the evening, when it is hoped that the congregation will, with their accustomed liberality, make a united and determined effort, by an abundant Easter offering, to remove a burden which more by inattention than willing neglect, has fallen upon them.

Those who wish to spread their contribution over an extended period can fill up the enclosed note.

All which is most respectfully submitted on behalf of the Church Committee.

GEO. HARGREAVES, }  
PERCIVAL R. BROWN, } WARDENS.

Should any members of the congregation be unable to attend the services, will they kindly send their contributions to either of the Churchwardens.

Financial  
Statement  
March 15<sup>th</sup>  
191.

**THE CHURCH WARDENS, in account with the REFORMED EPISCOPAL CHURCH, Victoria, B. C.**

Summary of Receipts and Expenditure from January 1st, 1890, to March 15th, 1891.

RECEIPTS.		EXPENDITURE.	
Pew Rents to date.....	\$1,332 05	Choir Master to March 8th.....	\$ 150 00
Offerings to March 15th, inclusive.....	1,661 35	Interest on Funded Debt.....	265 22
Pastoral Fund .....	736 35	Organist to November 30th, 1890.....	240 00
Burial Fees.....	13 50	Clergy, acct. Stipend.....	3,266 48
Entertainments, etc.....	939 95	Sexton, to March 1, 1891.....	215 50
Hospital Fund.....	51 85	Donation to Royal Jubilee Hospital.....	51 85
	4,735 05	General expenses, including fire insurance premium to 1893, \$137.50.....	681 78
Cash on hand January 1st, 1890.....	140 54		4,870 83
	<u>\$4,875 59</u>	Balance in hands of Wardens..	4 76
			<u>\$4,875 59</u>

**LIABILITIES.**

Organist, balance due at February 28th.....	\$ 60 00
Due Clergy, balance at February 28th.....	699 96
	<u>\$759 96</u>

GEORGE HARGREAVES, }  
PERCIVAL R. BROWN. } Church Wardens.

I have carefully examined the books and accounts to December 30th, 1890, and certify the same to be correct.

W. H. MASON,  
Auditor.

